

Info@SpitzLift.com

858.513.1260

www.SPITZLIFT.com



SPITZLIFT

Lightweight Aluminum Cranes

Aluminum SpitzLifts are load tested and certified.
SpitzLift meets ASME & OSHA standards.
858.513.1260 • www.SpitzLift.com • Info@SpitzLift.com

Total Payload-to-vehicle is less than 100lbs.
Aluminum SpitzLifts weigh less than 40 lbs and are pre-assembled
858.513.1260 • www.SpitzLift.com • Info@SpitzLift.com

DESIGNED & ENGINEERED TO:
BE AN ASSET FOR RISK MANAGEMENT
BE PAYLOAD EFFICIENT • INCREASE PRODUCTIVITY
MADE IN THE USA • SINCE 1999

OPTION 1

PICKUP TRUCKS



Since 1999, SpitzLift has been the leading manufacturer of lightweight aluminum lifting solutions. SpitzLifts are engineered to stand the test of time for a wide variety of applications on work trucks, military vehicles, trains, ships, and aircraft, and have been modified for use in many other industries. Thousands of SpitzLifts are being used every day worldwide. SpitzLifts are payload efficient, increase productivity, and are an asset for risk management.

Why SpitzLift

Safety

- Safeguard against negligence
- Protect your most valuable assets

Payload Efficiency

- Increases fuel economy
- Aluminum keeps it light

Quality

- Robust in design, stands the test of time
- Made in the USA

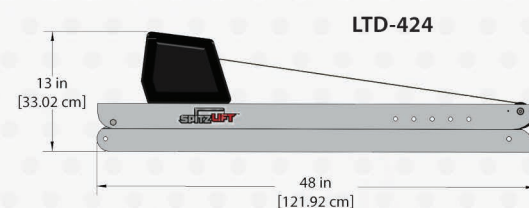
OPTION 2

SERVICE BODY



Aluminum DC SpitzLifts

- are designed and engineered to be payload efficient.
- weigh less than 40 lbs (total payload-to-vehicle weight is less than 100 lbs for SpitzLift, mount, hardware, and wiring). No additional reinforcement or crane pedestals are required.
- are load-tested and arrive pre-assembled with load-test certification.
- can be moved from vehicle to vehicle and/or used in other off-vehicle applications.
- are ASME and OSHA compliant.
- Spec Bid documents are available upon request.

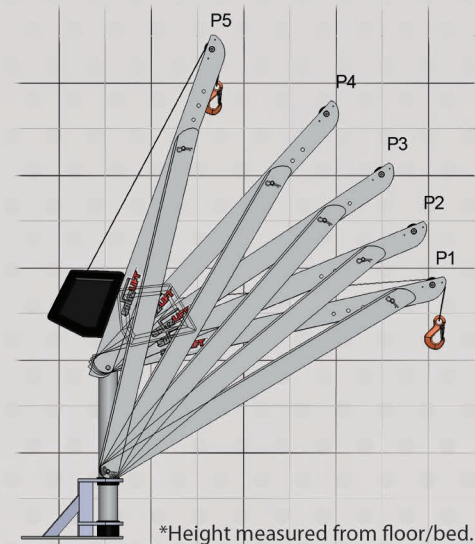


OPTION 3

ENCLOSED SERVICE BODY



Load Positions: P1 - P5



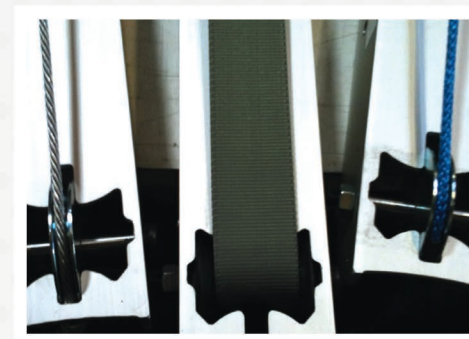
P1-P5	Load (lbs)	Load (kg)	Height (ft)	Height (cm)	Reach (ft)	Reach (cm)
P1	700 lbs	317.5 kg	4'10"	147.32 cm	3'11"	119.38 cm
P2	750 lbs	340.1 kg	5'5"	165.1 cm	3'9"	114.3 cm
P3	800 lbs	362.8 kg	6'1"	185.42 cm	3'5"	104.1 cm
P4	850 lbs	385.5 kg	6'9"	205.74 cm	2'11"	88.9 cm
P5	900 lbs	408.2 kg	7'6"	228.6 cm	1'10"	55.88 cm

OPTION 4

PLATFORM TRUCKS



Rope/Strap Options



(1) (2) (3)

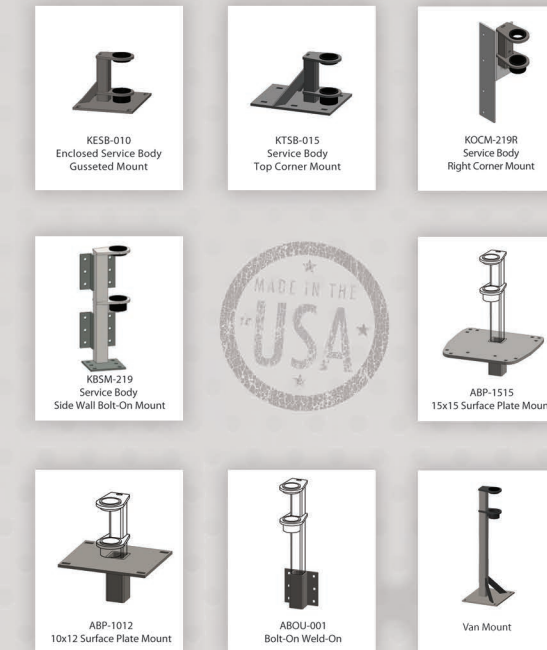
- 1. Wire Rope:** 3/16" air craft cable. 3600 lbs rating.
- 2. Strap:** 2" UV resistant webbing. Abrasion resistant edge. 7,000 lbs rating.
- 3. Synthetic Rope:** 3/16" 4900 lbs rating. Non-rotational. Fatigue, abrasion, UV & wear resistant.

OPTION 5

VANS



Mount Options



CUSTOM DESIGNS

MILITARY



Custom Design

We are ready to assist you with special projects. Our custom design engineering team has a successful track record of meeting custom application needs and exceeding customer's expectations.

- Train the Trainer: EHS Best Practices

- Crane-Hoist REcertifications

