

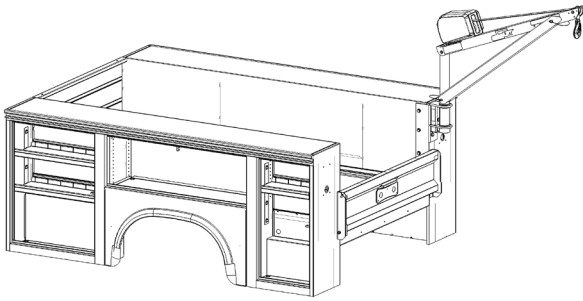
# SPITZLIFT SERVICE BODY PACKAGE - CORNER

LEFT SIDE (DRIVER SIDE) KOCM-219L | RIGHT SIDE (CURB SIDE) KOCM-219R

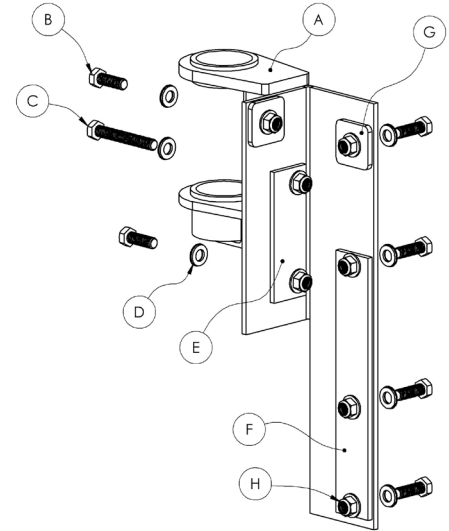


## INSTALLATION GUIDE

Installation document reflects curb side install. Can be installed on driver side by mirroring hardware kit components.



REF	PART DESCRIPTION	QTY
A	KOCM-219R   KOCM-219L	1
B	HEX HEAD SCREW, 1/2-13 X 1.5, G5 ZINC	6
C	HEX HEAD SCREW, 1/2-13 X 3.5, G5 ZINC	1
D	WASHER, 1/2" SEALING NEOPRENE, GALV	7
E	FLAT BAR, CORNER PEDESTAL HK 6X2	1
F	FLAT BAR, CORNER PEDESTAL HK 12 X 2	1
G	FLAT BAR, HK WASHER .25THK 1/2" BOLT	2
H	FLANGED HEX NUT, 1/2-13 NYLOC, ZINC	7



**DISCLAIMER:** It is recommended that SpitzLift pedestals be professionally installed. SpitzLift is not responsible for the structural integrity of the mounting structure.

**CAUTION:** Ensure the location for the pedestal is clear of all wires, harnesses, lines, fuel tank, etc.

### Step 1.

- Place the corner pedestal onto the Service Body, **fig I**.  
**Note:** The top plate of the pedestal should be flush with the top surface of the side pack, **fig II**.
- Using the holes on the pedestal, markout each hole location.
- Remove the pedestal and drill 17/32" (.53) hole at each location.

### Step 2.

- After drilling holes or making any penetrations, properly seal by liberally applying high grade silicone or other sealant around the perimeter of all holes and pedestal.  
**Note:** If silicone is applied properly, silicone will squeeze out. Remove excess silicone after Step 3.

### Step 3.

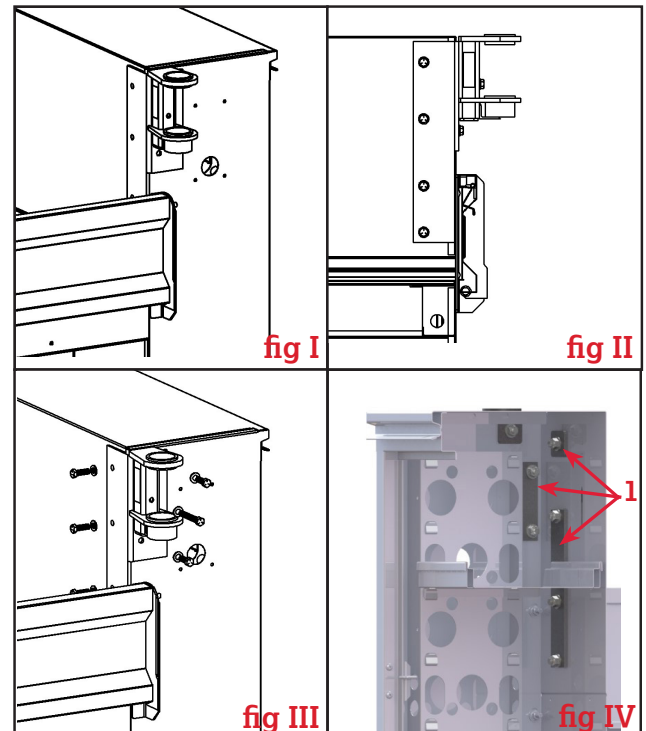
- Set the corner pedestal back in place by aligning the holes.
- Insert bolts with washers and nuts (**items B, C, D & H**), **fig III**.
- Place flat bar backing plates (**items E, F & G**) over the bolts on the inside of the side packs at locations indicated, **fig IV-1**.
- After all bolts are in place, torque to 75 ft-lbs.

### Step 4.

- When pedestal is installed to the vehicle, ensure that everything is structurally sound and that all holes are sealed with silicone.

### Step 5. Wiring Harness Installation (for DC powered installations, supplied with SpitzLift DC cranes)

- Run wiring harness through rear cabinet of sidepack along the chassis.
- Bolt ground lead to chassis. Run positive lead (which includes circuit breakers) and terminate out to positive battery connector or to auxiliary lug. Ensure both lead wires are properly attached along chassis without sagging and protected from being pinched.



### Step 5. continued

- Position the power supply connector onto the side wall of the vehicle in a location that is unobstructed within 2' of the SpitzLift power unit. Choose a location for ease of connecting and disconnecting the SpitzLift extension quick connect cable to the power supply connector. Install by screwing power supply connector into place, **fig V-2**.

### Step 6.

- Place SpitzLift into the pedestal and perform recommended load test. 125% max capacity.

### Step 7. Securing Crane for Travel

- Crane must face the front of vehicle to reduce wind chatter.
- Install tie-down to use for locking crane into travel position by attaching the hook to the tie down and placing tension on the crane by reeling in strap or cable. Typically, the crane will flex about an inch which indicates that it is secure.

**Note:** At some driving speeds the crane may begin to chatter. In order to eliminate chatter simply power in a little more strap or cable.

**Caution-**Do not over-tighten.

### Step 8.

Unplug power cord for travel and when crane is not in use, **fig V**.

