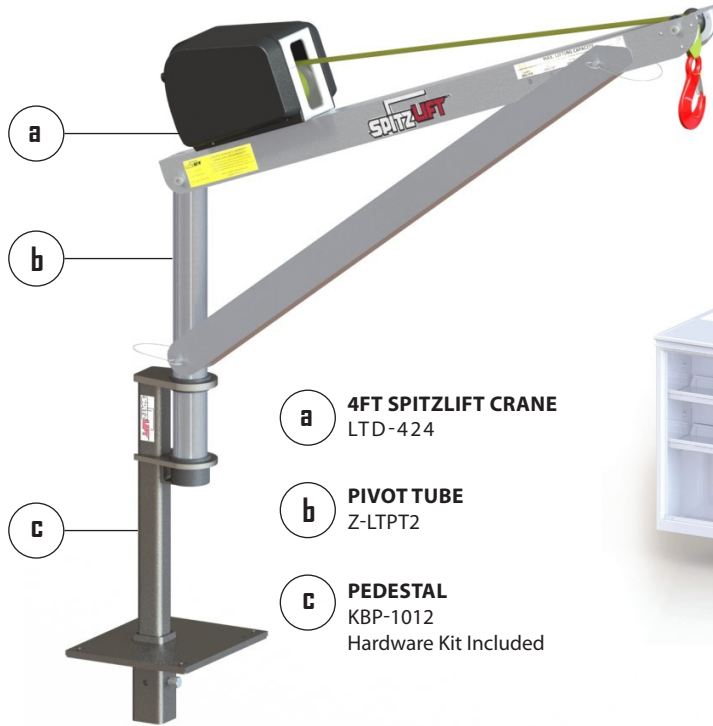
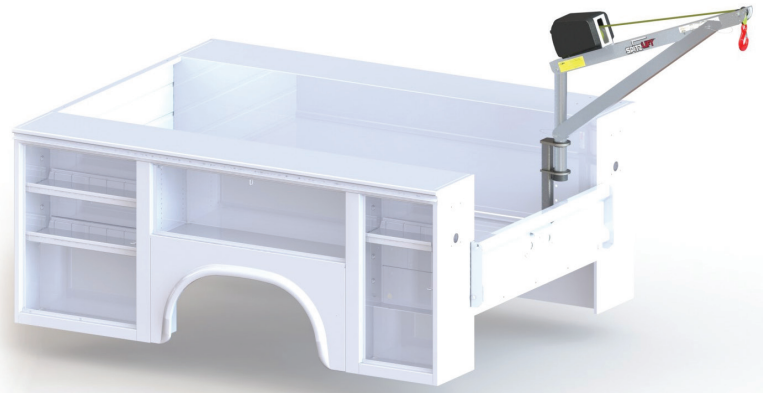


SPITZLIFT SERVICE BODY PACKAGE - BED

RIGHT SIDE (CURB SIDE) OR LEFT SIDE (DRIVER SIDE) KBP-1012



- a** 4FT SPITZLIFT CRANE LTD-424
- b** PIVOT TUBE Z-LTPT2
- c** PEDESTAL KBP-1012 Hardware Kit Included



| 4 FT SPITZLIFT CRANE - DC POWERED | SPECIFICATIONS |
|-----------------------------------|--|
| MAX LIFTING CAPACITY | 900 LBS (408.2 KG) |
| MANUFACTURING STANDARDS | COMPLIANT WITH OSHA AND ASME STANDARDS |
| ROTATION | 360° |
| WEBBING OR WIRE ROPE | 20' (609.6 CM) 50' (1524 CM) |
| LIFTING SPEED | 22'6" (6.858 M)/MIN (0.11/SEC) |
| PENDANT CONTROLLER | 10' (304.8 CM) |
| INSTALLED WEIGHT | APPROX. 60 LBS (27.2 KG) |
| POWER REQUIREMENTS | 12V DC @ 70 AMPS 120V AC @ 7 AMPS |
| STANDARD FINISH | CLEAR ANODIZED POWDER COATED |
| MATERIAL | AIRCRAFT GRADE ALUMINUM & STEEL |
| WARRANTY | 3 YEARS LIMITED |



Pendant Controller *

PART#: 25559-REMOTE10HK



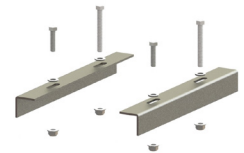
Quick Connect *

PART#: 24085



DC Wiring Harness *

PART#: 24049



Hardware Kit

PART#: KBP-1012H

*Included with DC powered units.