



SpitzLift Package Description Document

(Product Cut Sheet/ Install Guide)

PACKAGE DESCRIPTION: PLATFORM TRUCK HORIZONTAL PEDESTAL, 4 FT DC SPITZLIFT **MAX LOAD CAPACITY:** 900 LBS / 408 KG

PACKAGE ID #: PLATFORM - OPTION I **Right side (Curb Side) Install** **PACKAGE ID #:** PLATFORM - OPTION I **Left side (Driver Side) Install**

☐ **VEHICLE SPECIFIC PACKAGE** **VEHICLE MAKE** **VEHICLE MODEL** **START YEAR**



PACKAGE IMAGE

PACKAGE SPECIFICATIONS:

PLATFORM TRUCK HORIZONTAL PEDESTAL

PLATFORM - OPTION I

INSTALLS AROUND PERIMETER OF PLATFORM

INSTALL WEIGHT: APPROX. 83 LBS

LOAD CAPACITY: 900 LBS

INCLUDES:

12V DC CRANE LTD-424 WITH PENDANT, DC CONNECT & WIRING HARNESS, POST MAST KPHBS-026, PEDESTAL KBP-1012 WITH INSTALLATION REINFORCEMENT KIT KBP-1012H

SHIPPING WEIGHTS:

BOX 1 **LBS** **BOX 2** **LBS** **BOX 3** **LBS** **BOX 4** **LBS**

SPECIAL NOTES:

SPITZLIFT PROPRIETARY DOCUMENT

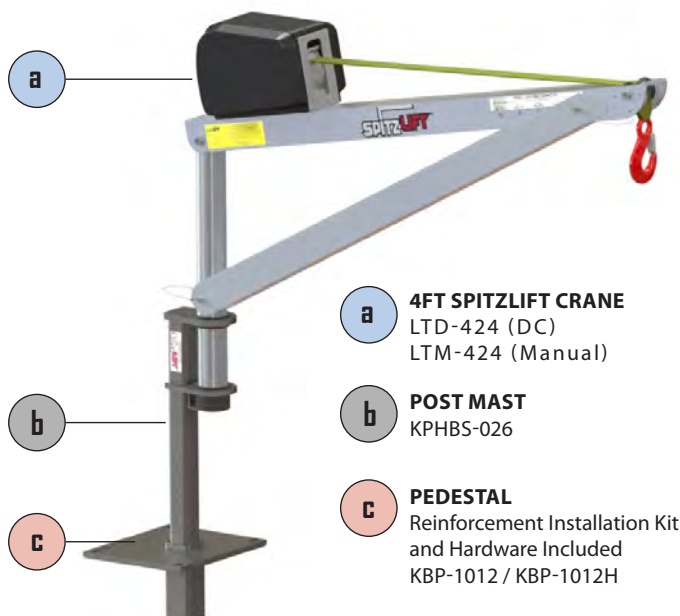
THE INFORMATION CONTAINED IN THIS DOCUMENT IS THE SOLE PROPERTY OF SPITZLIFT. ANY REPRODUCTION IN PART OR AS A WHOLE WITHOUT THE WRITTEN PERMISSION OF SPITZLIFT IS PROHIBITED.

Printed Document is uncontrolled

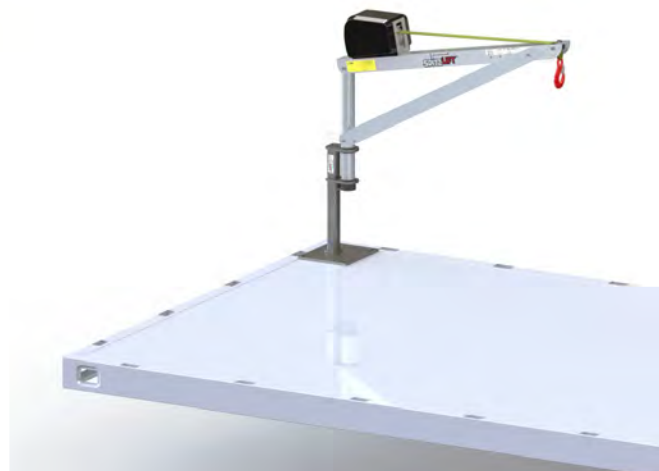
SL003-PDOCF-REV_A_1.23.2019_ENG

SPITZLIFT PLATFORM TRUCK PACKAGE - HORIZONTAL PEDESTAL

INSTALLS AROUND THE PERIMETER OF PLATFORM | KBP-1012
DC (PLATFORM - OPTION 1) | MANUAL (PLATFORM - OPTION 1M)



- a** **4FT SPITZLIFT CRANE**
LTD-424 (DC)
LTM-424 (Manual)
- b** **POST MAST**
KPHBS-026
- c** **PEDESTAL**
Reinforcement Installation Kit
and Hardware Included
KBP-1012 / KBP-1012H



4 FT SPITZLIFT CRANE - DC POWERED OR MANUAL	SPECIFICATIONS
MAX LIFTING CAPACITY	900 LBS (408.2 KG)
MANUFACTURING STANDARDS	COMPLIANT WITH OSHA AND ASME STANDARDS
ROTATION	360°
WEBBING OR WIRE ROPE	20' (609.6 CM) 50' (1524 CM)
LIFTING SPEED	DC - 22'6" (6.858 M)/MIN (0.11/SEC)
DC PENDANT CONTROLLER	10' (304.8 CM)
INSTALLED WEIGHT	DC - APPROX. 83 LBS (37.7 KG) MANUAL - APPROX. 78 LBS (35.4 KG)
POWER REQUIREMENTS	12V DC @ 70 AMPS
STANDARD FINISH	CLEAR ANODIZED POWDER COATED
MATERIAL	AIRCRAFT GRADE ALUMINUM & STEEL
WARRANTY	3 YEARS LIMITED



DC Pendant Controller

PART#: 25559-REMOTE10HK
Length: 10' (304.8 CM)



DC Quick Connect

PART#: 24085-4
Length: 4' (121.9 CM)



DC Wiring Harness

PART#: 24049
Length: 25' (762 CM)

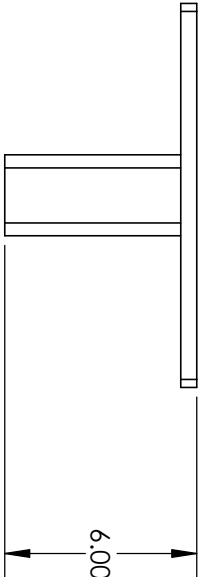
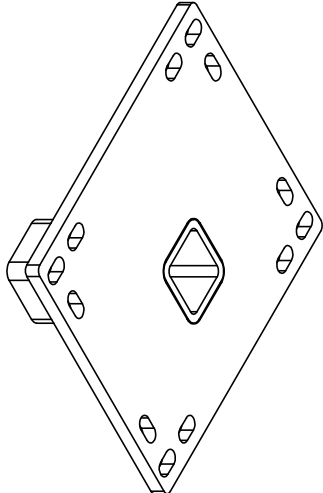
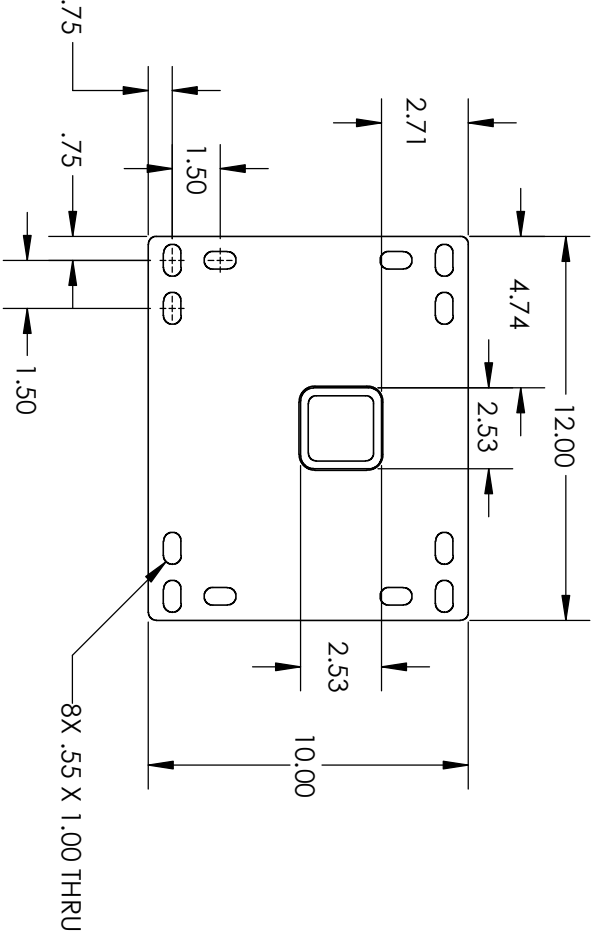


Reinforcement Kit

PART#: KBP-1012H

*Manual Handcrank Option available upon request.

OD DIMS & BOLT REFERENCE



MATERIAL DESCRIPTION:



REVISIONS			
ZONE	REV.	DESCRIPTION	DATE
A	1	INITIAL RELEASE	10/25/2018

TITLE:

MOUNT, 10X12

PROPRIETARY AND CONFIDENTIAL		UNLESS OTHERWISE SPECIFIED:		FINISH		MATERIAL:		SIZE		DWG. NO.		REV	
THE INFORMATION CONTAINED IN THIS DRAWING IS THE SOLE PROPERTY OF SPITZ LIFT INC. ANY REPRODUCTION IN PART OR AS A WHOLE WITHOUT THE WRITTEN PERMISSION OF SPITZ LIFT INC IS PROHIBITED.		DIMENSIONS ARE IN INCHES TOLERANCES: FRACTIONS: DECIMALS: ANGULAR: MACH: WELD: DECIMAL: ±.01		SEE NOTES		Material <not specified>		A		KBP-1012		A	
DRAWN		NAME		DATE		PROJECT:		SCALE: 1:6		WEIGHT: 21.65		SHEET 1 OF 1	
CHECKED		NAME		DATE		KBP-1012							
ENG APPR.		NAME		DATE									

SPITZLIFT PLATFORM TRUCK PACKAGE - HORIZONTAL PEDESTAL

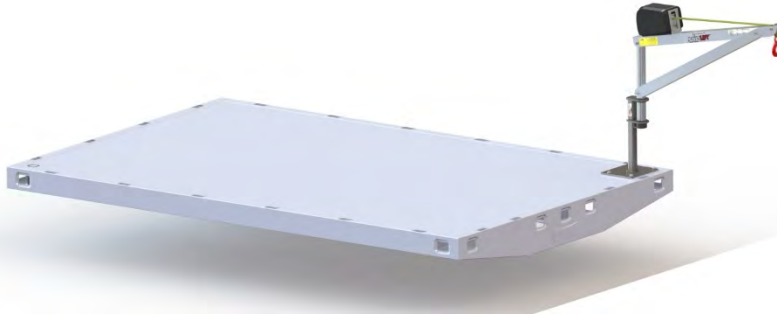
INSTALLS AROUND THE PERMIETER OF THE PLATFORM | KBP-1012
MAX CAPACITY 900 / 408 KG



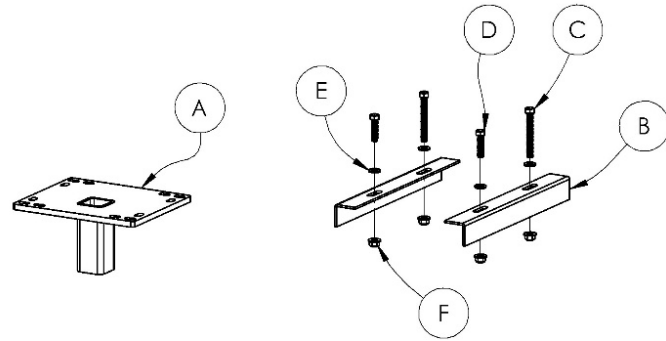
INSTALLATION GUIDE

DC OR MANUAL CRANE PEDESTAL INSTALLATIONS

Pedestal can be installed around the perimeter of the platform.



REF	Part Description	Qty
A	KBP-1012	1
B	2 X 2 X 3/16 THK STEEL ANGLE	2
C	HEX BOLT, 1/2"-13 X 4	2
D	HEX BOLT, 1/2"-13 X 2	2
E	SEALING WASHER, 1/2" GALV	4
F	FLANGED HEX NUT, 1/2-13 NYLOC, ZINC	4



DISCLAIMER: It is recommended that SpitzLift pedestals be professionally installed. SpitzLift is not responsible for the structural integrity of the mounting structure.

CAUTION: Ensure that the location for the pedestal is clear of all wires, harnesses, lines, fuel tank, etc.

Step 1.

- Locate desired placement location, typically installed at rear corner or forward corner of platform bed (**fig I**).
Note: These instructions may not apply based on Platform OEM designs or location of installation. Additional pedestal structural support hardware may be required in accordance to loads lifted.

KBP-1012 may be installed as:

- Flush mount with pocket down (**fig II-a**) or
- Pocket in (up position) (**fig II-b**).

Step 2 - Flush mount installations only:

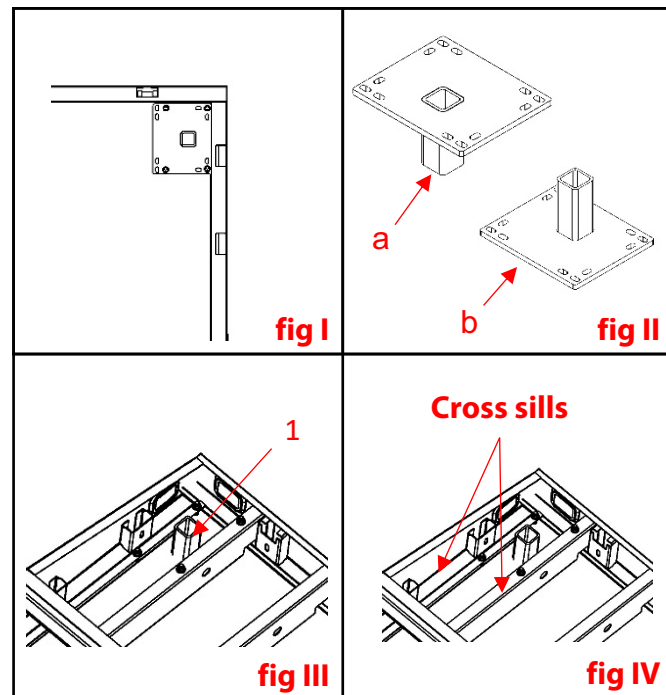
- Cut a 2 3/4" x 2 3/4" square hole for recess pocket installation. Ensure the holes do not interrupt the integrity of the vehicle frame or structural support members (**fig III-1**).

Step 2 - continued - Flush mount and pocket in

- Use the existing holes on the pedestal to mark hole locations to be drilled. Remove the pedestal and drill 17/32" (.53) holes at each location through the cross sills. Confirm the pedestal is on top of the cross sills for required structural integrity, (**fig IV**).

Note: Installer is required to add additional structural reinforcement support if pedestal position is not aligned over top of cross sills. (**follow step 3**).

Note: All drilled holes must be properly sealed by liberally applying high grade silicone or other sealant around the perimeter of all holes. If silicone is applied properly, silicone will squeeze out. Remove excess silicone after completion of installation.



SPITZLIFT PLATFORM TRUCK PACKAGE - HORIZONTAL PEDESTAL

INSTALLS AROUND THE PERIMETER OF THE PLATFORM | KBP-1012
MAX CAPACITY 900 / 408 KG



Step 3.

- Based on OEM platform design it may be necessary to cut two 2"x2" steel angles (**item B**) to fit between the 2 cross sills.
- Align the steel angles supports to match pedestal hole locations to the underbody of the platform.
- Insert the 1/2" bolts (**Item C, D, & E**) down through the pedestal, floor, and the cross sills or channel.
- Fasten with 1/2" nuts (**Item F**).
- Once all 4 bolts are in place with hardware washers, and nuts torque bolts to 75 ft-lbs.

Note: Installer may consider welding the 2 angle pieces on to the cross sills with 1/8" x 2" welds. However, this step is not required for most applications.

Step 4.

- When pedestal has been successfully attached to the vehicle, ensure that everything is structurally sound. Confirm that all cracks and holes are properly sealed with silicone.
- Insert the Post Mast into the pedestal. Assemble crane according to operations manual (**fig V**).

Step 5. SpitzLift Automotive Grade Wiring Harness Installation (For DC powered installations, supplied with SpitzLift DC cranes)

DC Wiring Harness components (**SpitzLift PN#24049**)

- 25 ft. power cable, 8 ft. ground cable
 - #8 wire (600v rating UL Type MTW VW-1)
 - 70amp (2 qty 35amp) circuit breakers (avg. current draw 50amps)
 - Anderson (SB-50) connector
- Run wiring harness along the chassis of the vehicle. Make certain that both lead wires are properly attached along chassis without sagging and are secured from being pinched.
 - Use rubber grommets on any hole penetrations. Ensure that the cable does not contact any heat sources that could cause damage.
 - Attach 8 ft. ground lead to chassis. Ensure ground connection is to bare metal, paint, or seal connection after termination
 - Run positive 25 ft. lead, which includes automatic circuit breakers, and terminate to positive battery connector or to auxiliary lug.
 - Position power supply connector for plugging the SpitzLift extension power cord (4 ft. standard length **SpitzLift PN#24085-4**) onto the side wall in a location that is unobstructed within 2' of the SpitzLift power unit.

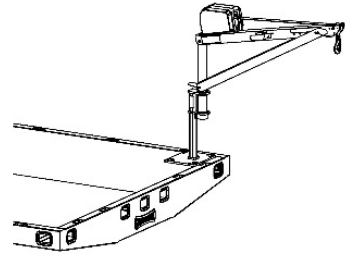


fig V

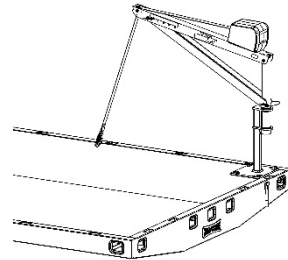


fig VI

Step 6.

Insert SpitzLift into the pedestal and perform recommended load test. 125% of max capacity.

Step 7. (Securing crane for travel)

- Crane must face to the front of vehicle, to reduce wind chatter.
- Install tie down to use for locking crane into travel position (**fig VI**).
- Fasten the hook to the tie down, Reel in the strap to add enough tension to secure the crane. The crane will flex about an inch, indicating that it is secure.
- Then disconnect power supply for transport and when crane is not in use.
 - Note:** If crane continues to chatter, tighten the strap a little more. Caution - do not over tighten.

Step 8.

- Unplug power cord for travel and when crane is not in use.