



SpitzLift Package Description Document

(Product Cut Sheet/ Install Guide)

PACKAGE DESCRIPTION: SERVICE BODY OPTION- DOUBLE CORNER MOUNT, 4FT DC SPITZLIFT

MAX LOAD CAPACITY: 900 LBS / 408 KG

PACKAGE ID #: OPTION 3-SB

Right side (Curb Side) Install

PACKAGE ID #: N/A

Left side (Driver Side) Install



VEHICLE SPECIFIC PACKAGE

VEHICLE MAKE

VEHICLE MODEL

START YEAR



PACKAGE IMAGE

PACKAGE SPECIFICATIONS:

Service Body Double Corner Pedestal

Option 3 - SB

2-Position Pedestal for Low Clearance Applications

Installs on Right Side

Install Weight: Approx. 65 lbs

Load Capacity: 900 lbs

Includes:

12V DC Crane LTD-424 with Pendant, DC Connect & Wiring Harness, Pedestal KCMD-020 with Installation Reinforcement Kit



SHIPPING WEIGHTS:

BOX 1 50 LBS

BOX 2 32 LBS

BOX 3 LBS

BOX 4 LBS

SPECIAL NOTES:

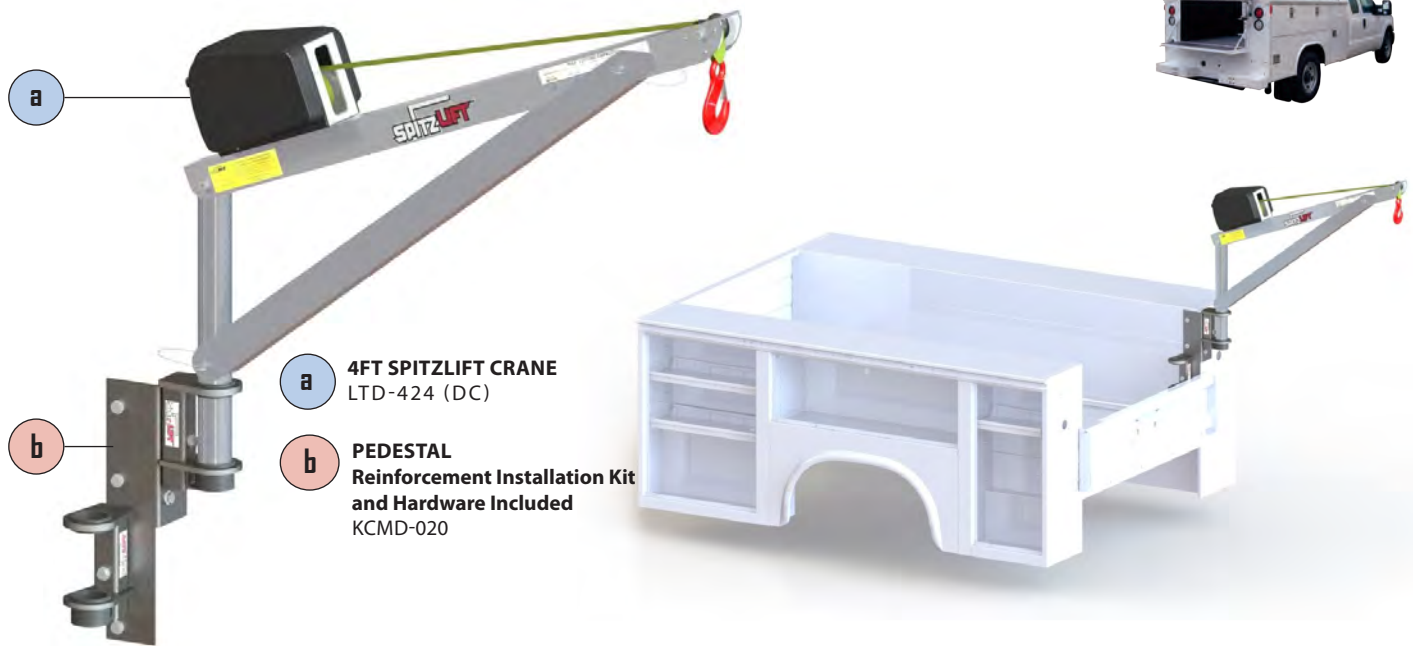
SPITZLIFT PROPRIETARY DOCUMENT

THE INFORMATION CONTAINED IN THIS DOCUMENT IS THE SOLE PROPERTY OF SPITZLIFT. ANY REPRODUCTION IN PART OR AS A WHOLE WITHOUT THE WRITTEN PERMISSION OF SPITZLIFT IS PROHIBITED.

Printed Document is uncontrolled

SL003-PDOCF-REV_A_1.23.2019_ENG

SPITZLIFT SERVICE BODY PACKAGE - DOUBLE CORNER
RIGHT SIDE (CURB SIDE) KCDM-020
DC (OPTION 3 - SB)



4 FT SPITZLIFT CRANE - DC POWERED	SPECIFICATIONS
MAX LIFTING CAPACITY	900 LBS (408.2 KG)
MANUFACTURING STANDARDS	COMPLIANT WITH OSHA AND ASME STANDARDS
ROTATION	360°
WEBBING OR WIRE ROPE	20' (609.6 CM) 50' (1524 CM)
LIFTING SPEED	DC - 22'6" (6.858 M)/MIN (0.11/SEC)
DC PENDANT CONTROLLER	10' (304.8 CM)
INSTALLED WEIGHT	DC - APPROX. 65 LBS (27.2 KG)
POWER REQUIREMENTS	12V DC @ 70 AMPS
STANDARD FINISH	CLEAR ANODIZED POWDER COATED
MATERIAL	AIRCRAFT GRADE ALUMINUM & STEEL
WARRANTY	3 YEARS LIMITED



DC Pendant Controller

PART#: 25559-REMOTE10HK
Length: 10' (304.8 CM)



DC Quick Connect

PART#: 24085-4
Length: 4' (121.9 CM)



DC Wiring Harness

PART#: 24049
Length: 25' (762 CM)



Reinforcement Kit

PART#: INCLUDED WITH PEDESTAL

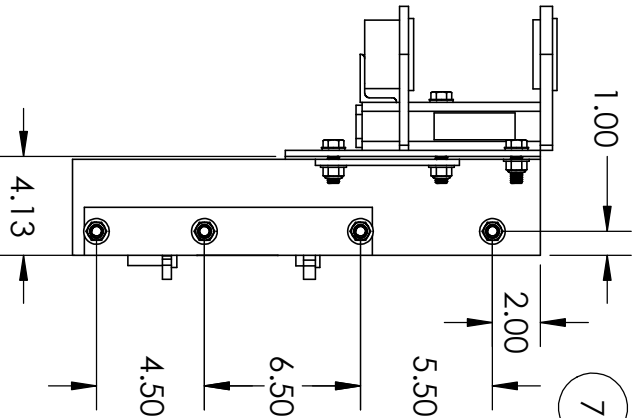
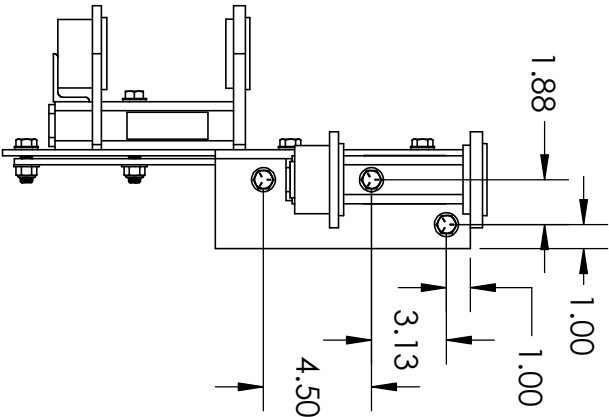
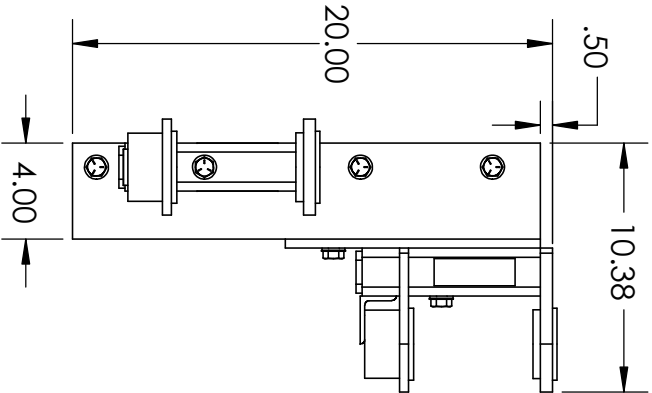
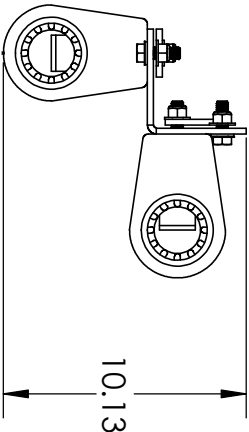
*Manual Handcrank Option available upon request.

ITEM NO.	DESCRIPTION	Default/Qty.
1	MOUNT, DOUBLE CORNER MOUNT	1
2	FLAT BAR, CORNER MOUNT HK 6X2	1
3	FLAT BAR, CORNER MOUNT HK 12 X 2	1
4	WASHER, 1/2" SEALING NEOPRENE, GALV	7
5	HEX HEAD SCREW, 1/2-13 X 1.5, G5 ZINC	5
6	HEX HEAD SCREW, 1/2-13 X 3.5, G5 ZINC	2
7	FLANGED HEX NUT, 1/2-13 NYLOC, ZINC	7



PROPRIETARY AND CONFIDENTIAL
 THE INFORMATION CONTAINED IN THIS
 DRAWING IS THE SOLE PROPERTY OF
 SPITZLIFT INC. ANY REPRODUCTION IN
 PART OR AS A WHOLE WITHOUT THE
 WRITTEN PERMISSION OF SPITZLIFT INC IS
 PROHIBITED.

KDCM-020- OVERALL DIMENSIONS & BOLT HOLE PATTERN
 (HOLE REQUIRED 17/32 (.53) DIA FOR 1/2-13 BOLTS)



SPITZLIFT SERVICE BODY PACKAGE - DOUBLE CORNER

RIGHT SIDE (CURB SIDE) KCDM-020

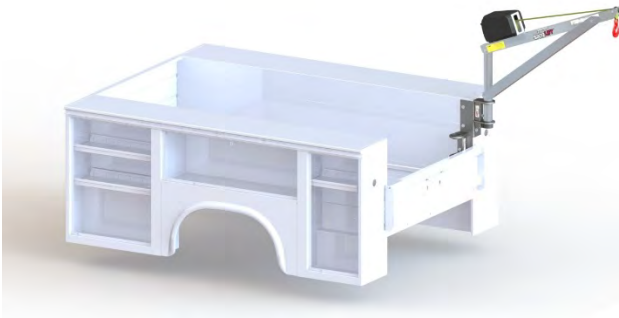
MAX CAPACITY 900 / 408 KG



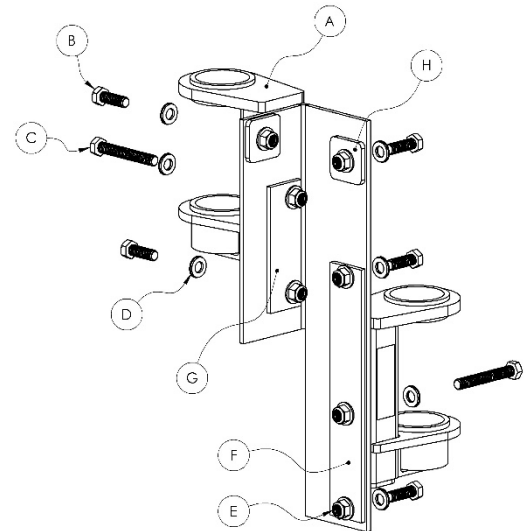
INSTALLATION GUIDE

DC OR MANUAL CRANE PEDESTAL INSTALLATIONS

Installs on curb side only.



REF	Part Description	Qty
A	KCDM-020	1
B	HEX HEAD SCREW, 1/2-13 X 1.5, G5 ZINC	5
C	HEX HEAD SCREW, 1/2-13 X 3.5, G5 ZINC	2
D	WASHER, 1/2" SEALING NEOPRENE, GALV	7
E	FLANGED HEX NUT, 1/2-13 NYLOC, ZINC	7
F	FLAT BAR, CORNER MOUNT HK 12 X 2	1
G	FLAT BAR, CORNER MOUNT HK 6X2	1
H	FLAT BAR, HK WASHER.25 THK 1/2" BOLT	1



DISCLAIMER: It is recommended that SpitzLift pedestals be professionally installed. SpitzLift is not responsible for the structural integrity of the mounting structure.

CAUTION: Ensure that the location for the pedestal is clear of all wires, harnesses, lines, fuel tank, etc.

Step 1.

- Place the double-corner pedestal onto the Service Body (**fig I**).
- The top plate of the mount should be flush with the top surface of the side pack (**fig II**).
- Use pedestal as a template for marking out hole locations. Remove the pedestal and drill 17/32 (.53) hole at each location.

Note:

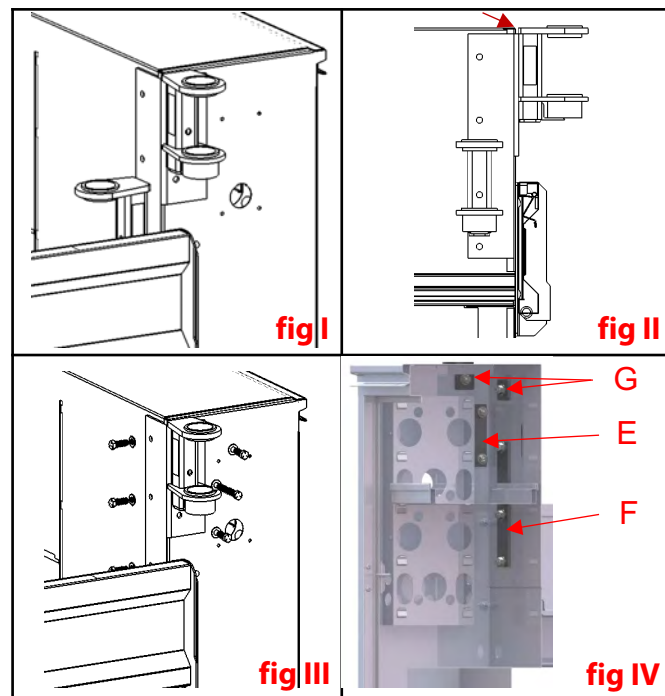
- Once holes are drilled, properly seal by liberally applying high grade silicone or other sealant around the perimeter of all holes.
- If silicone is applied properly, silicone will squeeze out. Remove excess silicone after completion of installation.

Step 2.

- Set the corner pedestal back in place by aligning the holes.
- Insert Bolts with washers and nuts (**items B, C, D, & E**) (**fig III**).
- Place flat bar backing plates (**items F, G, & H**) over the bolts on the inside of the side packs at locations indicated (**fig IV-1**).
- After all bolts are in place, torque to 75 ft-lbs.

Step 3.

- When pedestal is installed to the vehicle, ensure that everything is structurally sound and that all holes are sealed with silicone. Assemble crane according to operations manual.



SPITZLIFT SERVICE BODY PACKAGE - DOUBLE CORNER

RIGHT SIDE (CURB SIDE) KCMD-020

MAX CAPACITY 900 / 408 KG



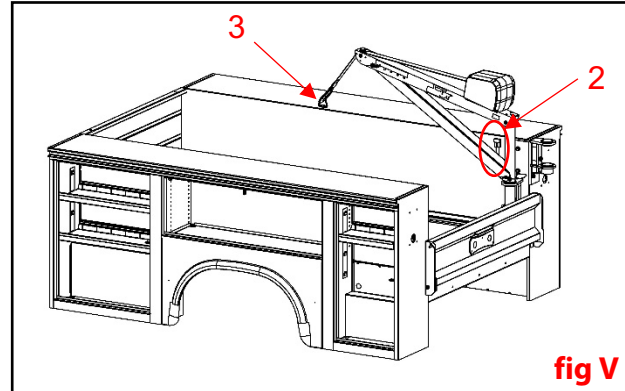
Step 5. SpitzLift Automotive Grade Wiring Harness Installation (For DC powered installations, supplied with SpitzLift DC cranes)

DC Wiring Harness components (SpitzLift PN#24049)

- 25 ft. power cable, 8 ft. ground cable
- #8 wire (600v rating UL Type MTW VW-1)
- 70amp (2 qty 35amp) circuit breakers (avg. current draw 50amps)
- Anderson (SB-50) connector



- Run wiring harness along the chassis of the vehicle. Make certain that both lead wires are properly attached along chassis without sagging and are secured from being pinched.
- Use rubber grommets on any hole penetrations. Ensure that the cable does not contact any heat sources that could cause damage.
- Attach 8 ft. ground lead to chassis. Ensure ground connection is to bare metal, paint, or seal connection after termination
- Run positive 25 ft. lead, which includes automatic circuit breakers, and terminate to positive battery connector or to auxiliary lug.
- Position power supply connector for plugging the SpitzLift extension power cord (4 ft. standard length **SpitzLift PN#24085-4**) onto the side wall in a location that is unobstructed within 2' of the SpitzLift power unit (**fig V-2**).



Step 6.

Insert SpitzLift into the pedestal and perform recommended load test. 125% of max capacity.

Step 7. (Securing crane for travel)

- Crane must face to the front of vehicle to reduce wind chatter.
- Utilize or install a tie down for locking crane into travel position.
- Fasten the hook to the tie down, Reel in the strap to add enough tension to secure the crane. The crane will flex about an inch, indicating that it is secure (**fig V-3**).
- Then, disconnect the power supply for transport and when crane is not in use.

Note: If crane continues to chatter, tighten the strap a little more. Caution do not over tighten (**fig V-3**).

Step 8.

Unplug power cord for travel and when crane is not in use.