



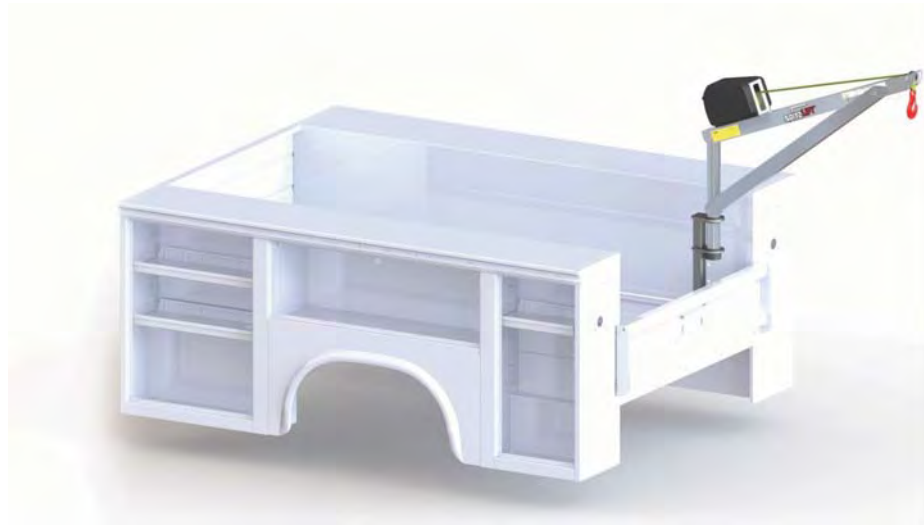
# SpitzLift Package Description Document

(Product Cut Sheet/ Install Guide)

**PACKAGE DESCRIPTION:** SERVICE BODY IN-BED PEDESTAL, 4FT DC SPITZLIFT **MAX LOAD CAPACITY:** 900 LBS / 408 KG

**PACKAGE ID #:** OPTION 5 - SB **Right side (Curb Side) Install** **PACKAGE ID #:** OPTION 5 - SB **Left side (Driver Side) Install**

☐ **VEHICLE SPECIFIC PACKAGE** **VEHICLE MAKE**  **VEHICLE MODEL**  **START YEAR**



PACKAGE IMAGE

## PACKAGE SPECIFICATIONS:

Service Body In-Bed Floor Pedestal

Option 5 - SB

Installs on Right or Left Side

Install Weight: Approx. 83 lbs

Load Capacity: 900 lbs

Includes:

12V DC Crane LTD-424 with Pendant, DC Connect & Wiring Harness, Post Mast KPHBS-026, Pedestal KBP-1012 with Installation Reinforcement Kit KBP-1012H

## SHIPPING WEIGHTS:

**BOX 1**  **LBS** **BOX 2**  **LBS** **BOX 3**  **LBS** **BOX 4**  **LBS**

## SPECIAL NOTES:

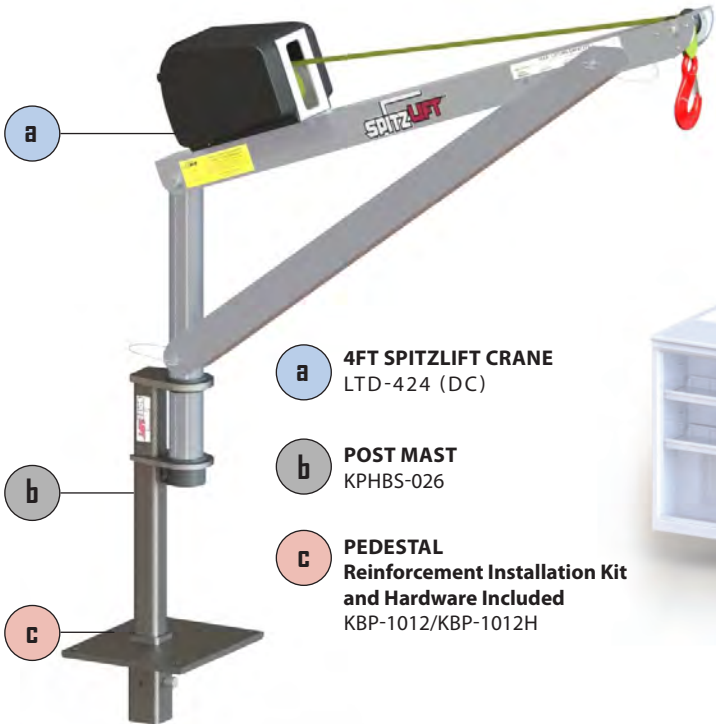
### SPITZLIFT PROPRIETARY DOCUMENT

THE INFORMATION CONTAINED IN THIS DOCUMENT IS THE SOLE PROPERTY OF SPITZLIFT. ANY REPRODUCTION IN PART OR AS A WHOLE WITHOUT THE WRITTEN PERMISSION OF SPITZLIFT IS PROHIBITED.

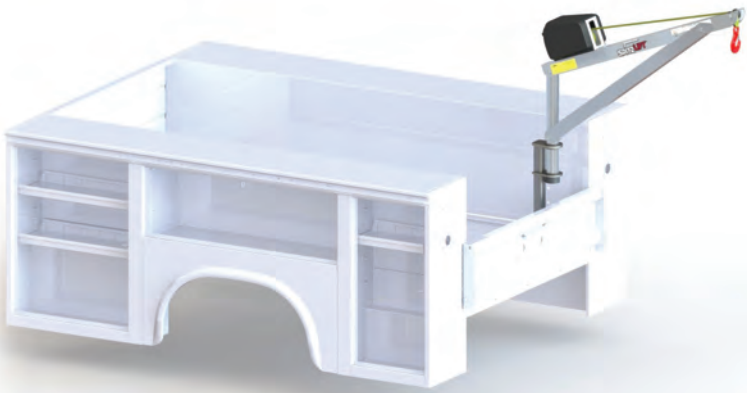
Printed Document is uncontrolled

SL003-PDOCF-REV\_A\_1.23.2019\_ENG

**SPITZLIFT SERVICE BODY PACKAGE - IN-BED**  
RIGHT SIDE (CURB SIDE) OR LEFT SIDE (DRIVER SIDE) KBP-1012



- a** 4FT SPITZLIFT CRANE LTD-424 (DC)
- b** POST MAST KPHBS-026
- c** PEDESTAL Reinforcement Installation Kit and Hardware Included KBP-1012/KBP-1012H



4 FT SPITZLIFT CRANE - DC POWERED	SPECIFICATIONS
MAX LIFTING CAPACITY	900 LBS (408.2 KG)
MANUFACTURING STANDARDS	COMPLIANT WITH OSHA AND ASME STANDARDS
ROTATION	360°
WEBBING OR WIRE ROPE	20' (609.6 CM)   50' (1524 CM)
LIFTING SPEED	DC - 22"6"(6.858 M)/MIN (0.11/SEC)
DC PENDANT CONTROLLER	10' (304.8 CM)
INSTALLED WEIGHT	DC - APPROX. 83 LBS (37.7 KG)
POWER REQUIREMENTS	12V DC @ 70 AMPS
STANDARD FINISH	CLEAR ANODIZED   POWDER COATED
MATERIAL	AIRCRAFT GRADE ALUMINUM & STEEL
WARRANTY	3 YEARS LIMITED



**DC Pendant Controller**

PART#: 25559-REMOTE10HK  
Length: 10' (304.8 CM)



**DC Quick Connect**

PART#: 24085-4  
Length: 4' (121.9 CM)



**DC Wiring Harness**

PART#: 24049  
Length: 25' (762 CM)

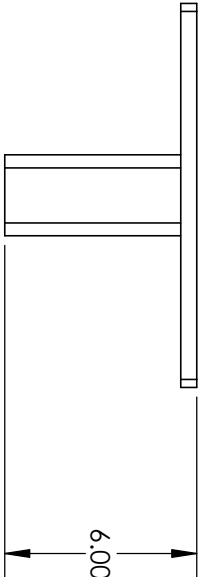
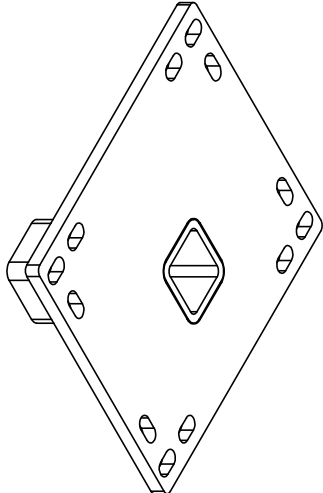
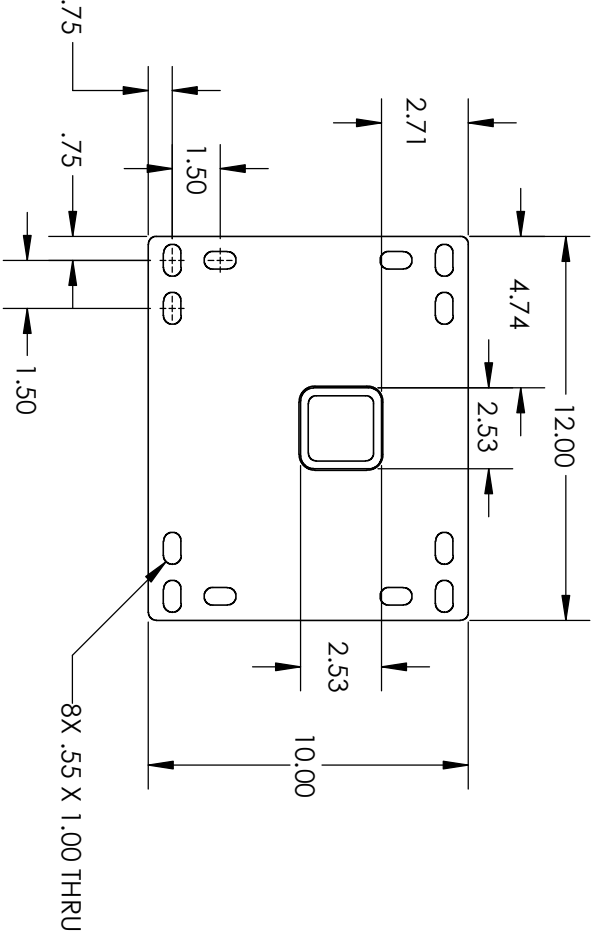


**Reinforcement Kit**

PART#: KBP-1012H

\*Manual Handcrank cranes available upon request.

OD DIMS & BOLT REFERENCE



REVISIONS			
ZONE	REV.	DESCRIPTION	DATE
	A	INITIAL RELEASE	10/25/2018

TITLE:

MOUNT, 10X12



MATERIAL DESCRIPTION:

<b>PROPRIETARY AND CONFIDENTIAL</b> THE INFORMATION CONTAINED IN THIS DRAWING IS THE SOLE PROPERTY OF SPITZLIFT INC. ANY REPRODUCTION IN PART OR AS A WHOLE WITHOUT THE WRITTEN PERMISSION OF SPITZLIFT INC IS PROHIBITED.		UNLESS OTHERWISE SPECIFIED:		FINISH		MATERIAL:		TITLE:	
NAME	DATE	DIMENSIONS ARE IN INCHES TOLERANCES: FRACTIONS: ±1/64 DECIMALS: ±.005 ANGULAR: MACH ±1 DEG BEND/WELD ±1/16 ±1 DEG DECIMAL: ±.01		SEE NOTES		Material <not specified>		MOUNT, 10X12	
DRAWN	10/25/2018								
SM									
CHECKED	10/25/2018								
MJS									
ENG APPR.	10/25/2018								
MJS									

# SPITZLIFT SERVICE BODY PACKAGE - IN-BED

RIGHT SIDE (CURB SIDE) | LEFT SIDE (DRIVER SIDE) KBP-1012

MAX CAPACITY 900 / 408 KG

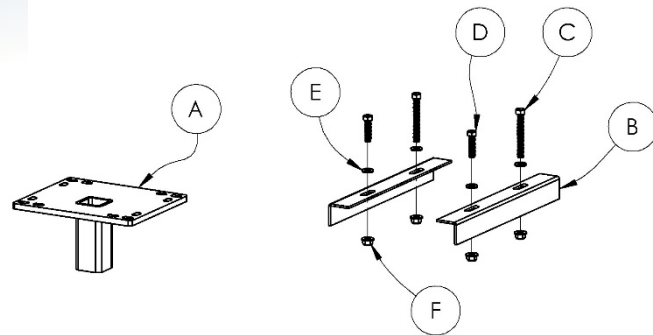
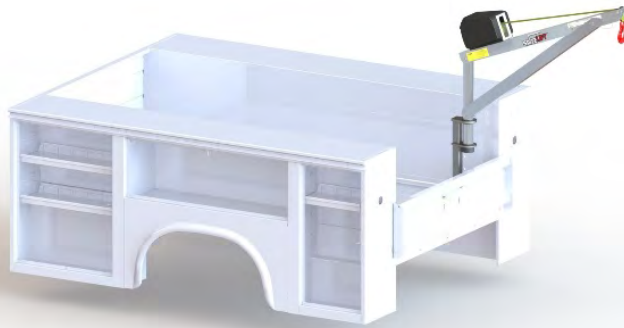


## INSTALLATION GUIDE

DC OR MANUAL CRANE PEDESTAL INSTALLATIONS

Installation document reflects Curb Side install.

Can be installed on driver side.



REF	Part Description	Qty
A	KBP-1012	1
B	2 X 2 X 3/16 THK STEEL ANGLE	2
C	HEX BOLT, 1/2"-13 X 4	2
D	HEX BOLT, 1/2"-13 X 2	2
E	SEALING WASHER, 1/2" GALV	4
F	FLANGED HEX NUT, 1/2-13 NYLOC, ZINC	4

**DISCLAIMER:** It is recommended that SpitzLift pedestals be professionally installed. SpitzLift is not responsible for the structural integrity of the mounting structure.

**CAUTION:** Ensure that the location for the pedestal is clear of all wires, harnesses, lines, fuel tank, etc.

### Step 1.

- Install at rear corner of bed on left or right side (**fig I**).

**Note:** It is important to ensure that hole locations of pedestal align with structural support members. Based on OEM design, additional pedestal structural support hardware may be required.

**KBP-1012 may be installed as:**

- Flush mount with pocket down (**fig II-a**) or
- Pocket in (up position) (**fig II-b**).

### Step 2 - Flush mount installations only:

- Cut a 2 3/4" x 2 3/4" square hole for recess pocket installation. Ensure the holes do not interrupt the integrity of the vehicle frame or structural support members (**fig III-1**).

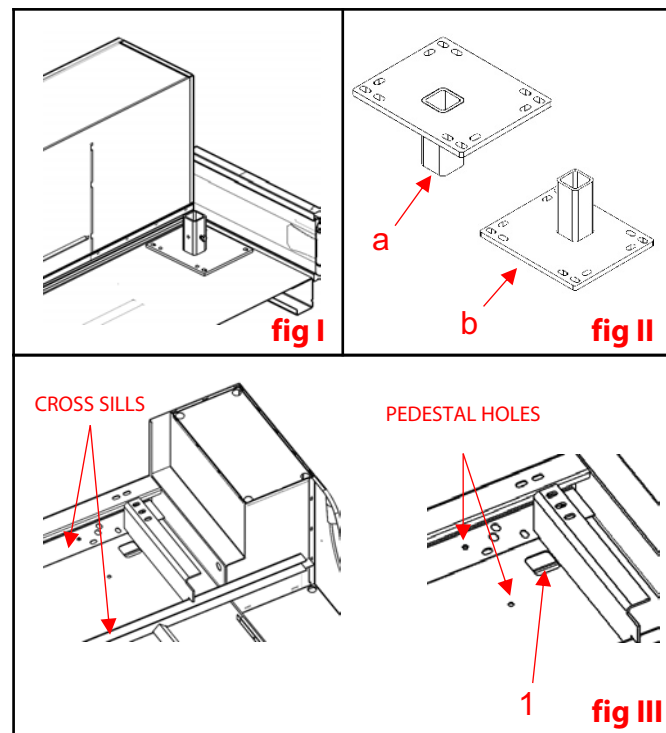
**Note:** When installing pedestal pocket facing up (**fig II-b**), 2 3/4" x 2 3/4" square hole is not required.

### Step 2 - continued - Flush mount and pocket in

- Use the existing holes on the pedestal to mark hole locations to be drilled through the bed.
- Remove the pedestal and drill 17/32" (.53) hole at each location through the cross sills. Prior to drilling, confirm the pedestal is aligned with the cross sills for required structural integrity (**fig III**).

**Note:** Installer is required to add additional structural reinforcement support if pedestal position is not aligned over top of cross sills. (**follow step 3**).

**Note:** All drilled holes must be properly sealed by liberally applying high grade silicone or other sealant around the perimeter of all holes. If silicone is applied properly, silicone will squeeze out. Remove excess silicone after completion of installation.



# SPITZLIFT SERVICE BODY PACKAGE - IN-BED

RIGHT SIDE (CURB SIDE) | LEFT SIDE (DRIVER SIDE) KBP-1012

MAX CAPACITY 900 / 408 KG



## Step 3.

- Based on OEM design, it may be necessary to cut two 2"x 2" steel angles (item **B**) to fit between the 2 cross sills. (fig IV-2)
- Align the steel angles supports to match pedestal hole locations to the underbody of the platform.
- Insert the 1/2" bolts (item **C, D, & E**) down through the pedestal, floor, and the cross sills or channel.
- Fasten with 1/2" nuts (item **F**).
- Once all 4 bolts are in place with hardware washers, and nuts torque bolts to 75 ft-lbs (fig V).

**Note:** Installer may consider welding the 2 angle pieces on to the cross sills with 1/8" x 2" welds. However, this step is not required for most applications.

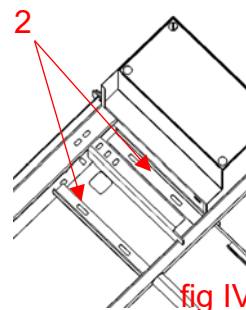


fig IV

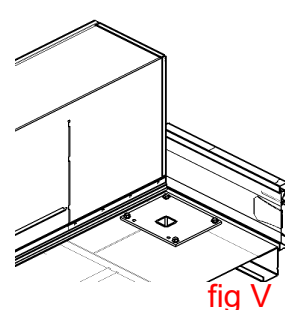


fig V

## Step 4.

- When pedestal has been successfully attached to the vehicle, ensure that everything is structurally sound. Confirm that all cracks and holes are properly sealed with silicone.
- Insert the Post Mast into the pedestal. Assemble crane according to operations manual (fig VII).

## Step 5. SpitzLift Automotive Grade Wiring Harness Installation (For DC powered installations, supplied with SpitzLift DC cranes)

### DC Wiring Harness components (SpitzLift PN#24049)

- 25 ft. power cable, 8 ft. ground cable.
- #8 wire (600v rating UL Type MTW VW-1)
- 70amp (2 qty 35amp) circuit breakers (avg. current draw 50amps)
- Anderson (SB-50) connector



- Run wiring harness along the chassis of the vehicle. Make certain that both lead wires are properly attached along chassis without sagging and are secured from being pinched.
- Use rubber grommets on any hole penetrations. Ensure that the cable does not contact any heat sources that could cause damage.
- Attach 8 ft. ground lead to chassis. Ensure ground connection is to bare metal, paint, or seal connection after termination
- Run positive 25 ft. lead, which includes automatic circuit breakers, and terminate to positive battery connector or to auxiliary lug.
- Position power supply connector for plugging the SpitzLift extension power cord (4 ft. standard length **SpitzLift PN#24085-4**) onto the side wall in a location that is unobstructed within 2' of the SpitzLift power unit (fig VIII-3).

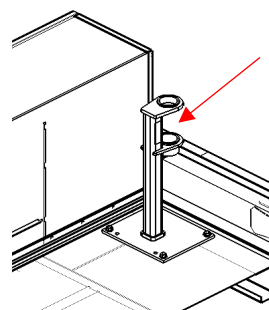


fig VII

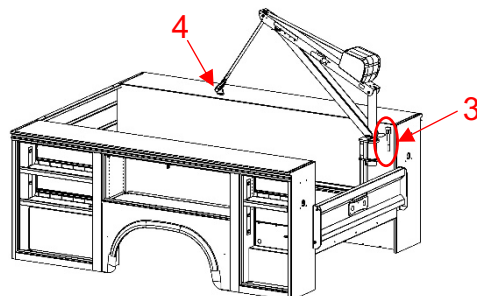


fig VIII

## Step 6.

Insert SpitzLift into the pedestal and perform recommended load test. 125% of max capacity.

## Step 7. (Securing crane for travel)

- Crane must face to the front of vehicle to reduce wind chatter.
- Utilize or install a tie down for locking crane into travel position (fig VIII-4).
- Fasten the hook to the tie down, Reel in the strap to add enough tension to secure the crane. The crane will flex about an inch, indicating that it is secure.
- Then, disconnect the power supply for transport and when crane is not in use.

**Note:** If crane continues to chatter, tighten the strap a little more.  
Caution - do not over tighten.

## Step 8.

Unplug power cord for travel and when crane is not in use.