



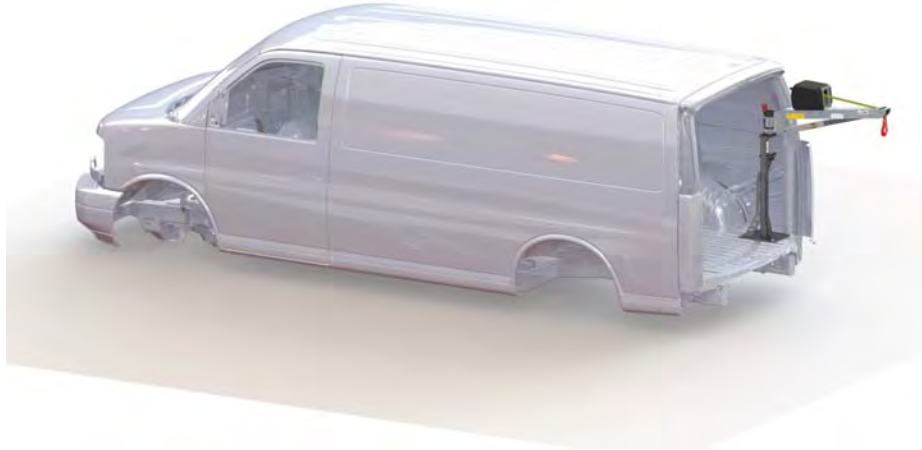
SpitzLift Package Description Document

(Product Cut Sheet/ Install Guide)

PACKAGE DESCRIPTION: GMC SAVANA - REAR DOOR, 3FT FOLD DOWN, 30" PEDESTAL **MAX LOAD CAPACITY:** 650 LBS / 295 KG

PACKAGE ID #: OPTION 1-GM **Right side (Curb Side) Install** **PACKAGE ID #:** OPTION 1-GM **Left side (Driver Side) Install**

☒ **VEHICLE SPECIFIC PACKAGE** **VEHICLE MAKE** GMC **VEHICLE MODEL** Savana **START YEAR** 2018



PACKAGE IMAGE

PACKAGE SPECIFICATIONS:

GMC Van Savana-Rear Door-2018
Option 1 - GM

Description:
Installs on either Left or Right Side
Install Weight: Approx. 76 lbs
Load Capacity: 650 lbs

Includes:
12V DC Fold-Down Crane LTD-3QRT with Pendant, DC Connect & Wiring Harness , 13" Pivot Tube Z-LTPT13,
Pedestal KBPSG-010-030, with Installation Reinforcement Kit KBP-1012-GM18

SHIPPING WEIGHTS:

BOX 1 50 **LBS** **BOX 2** 46 **LBS** **BOX 3** 10 **LBS** **BOX 4** **LBS**

SPECIAL NOTES:

Please allow for additional lead time.

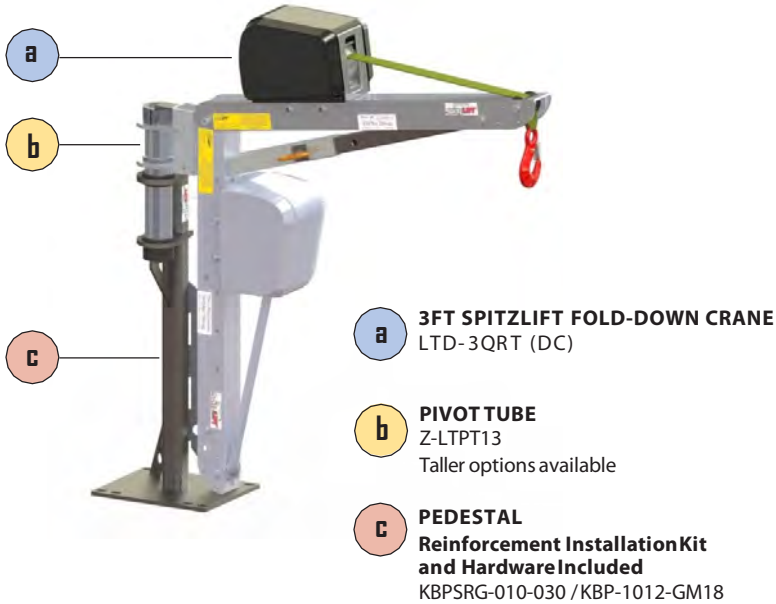
SPITZLIFT PROPRIETARY DOCUMENT

THE INFORMATION CONTAINED IN THIS DOCUMENT IS THE SOLE PROPERTY OF SPITZLIFT. ANY REPRODUCTION IN PART OR AS A WHOLE WITHOUT THE WRITTEN PERMISSION OF SPITZLIFT IS PROHIBITED.

Printed Document is uncontrolled

SL003-PDOCF-REV_A_1.23.2019_ENG

SPITZLIFT VAN PACKAGE: GMC SAVANA/CHEVY EXPRESS REAR DOOR RIGHT SIDE (CURB SIDE) | LEFT (DRIVER SIDE) KBPSG-010-030



3 FT SPITZLIFT FOLD-DOWN CRANE - DC POWERED	SPECIFICATIONS
MAX LIFTING CAPACITY	650 LBS (294.8 KG)
MANUFACTURING STANDARDS	COMPLIANT WITH OSHA AND ASME STANDARDS
ROTATION	360°
WEBBING OR WIRE ROPE	20' (609.6 CM) 50' (1524 CM)
LIFTING SPEED	DC - 22'6" (6.858 M)/MIN (0.11/SEC)
DC PENDANT CONTROLLER	10' (304.8 CM)
INSTALLED WEIGHT	DC - APPROX. 91 LBS (41.3KG)
POWER REQUIREMENTS	12V DC @70 AMPS
STANDARD FINISH	CLEAR ANODIZED POWDER COATED
MATERIAL	AIRCRAFT GRADE ALUMINUM & STEEL
WARRANTY	3 YEARS LIMITED



DC Pendant Controller

PART#: 25559-REMOTE10HK
Length: 10' (304.8CM)



DC Quick Connect

PART#: 24085-4
Length: 4' (121.9 CM)



DC Wiring Harness

PART#: 24049
Length: 25' (762 CM)

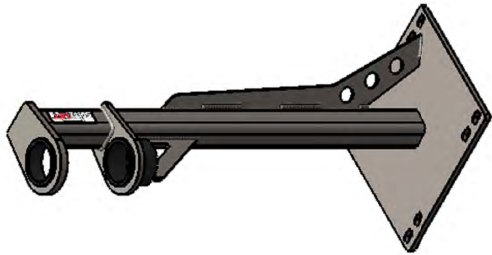
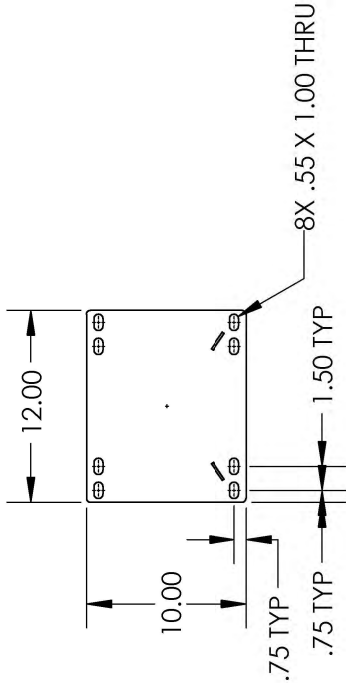
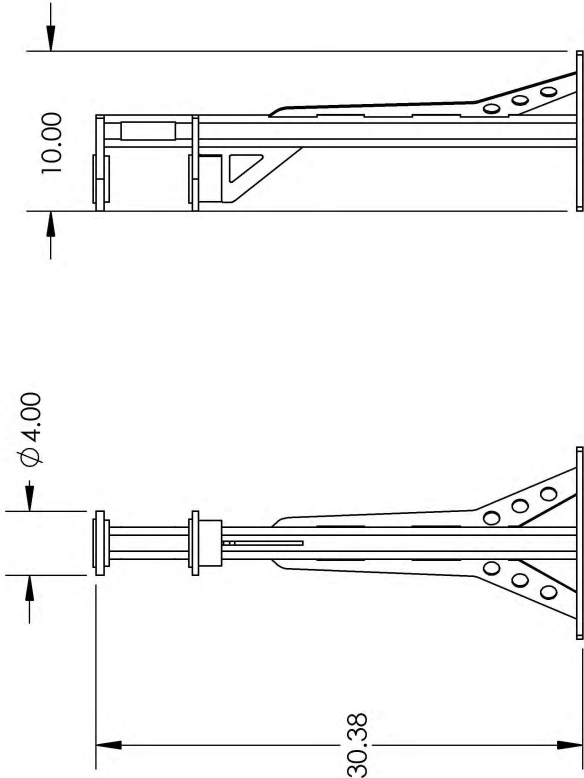


Reinforcement Kit

PART#: KBP-1012-GM18

*Manual Handcrank Option available upon request.

OVER ALL DIMS & BOLT HOLE REFERENCE



REVISIONS			
ZONE	REV.	DESCRIPTION	DATE
	A		10/25/2018

TITLE:



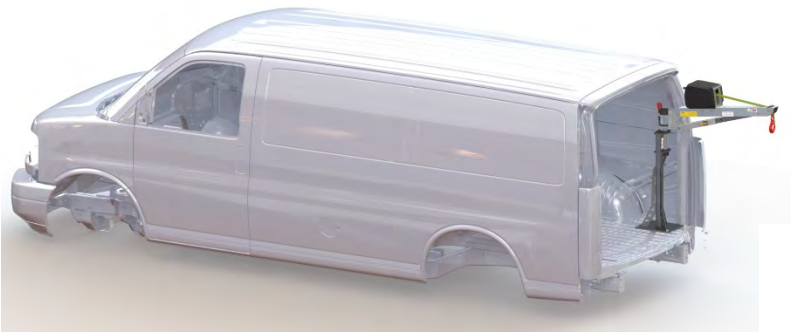
MATERIAL: N/A

PROJECT: KBPSRG-010-030-1

MATERIAL DESCRIPTION:

MOUNT, 30" REAR GUSSET-1

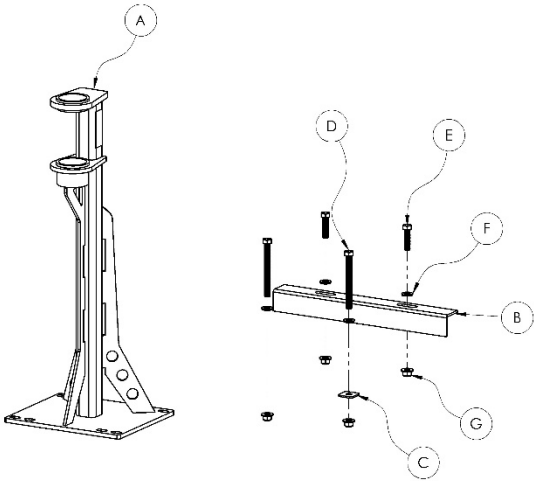
PROPRIETARY AND CONFIDENTIAL THE INFORMATION CONTAINED IN THIS DRAWING IS THE SOLE PROPERTY OF SPITZLIFT INC. ANY REPRODUCTION IN PART OR AS A WHOLE WITHOUT THE WRITTEN PERMISSION OF SPITZLIFT INC IS PROHIBITED.	NAME	DATE	UNLESS OTHERWISE SPECIFIED: DIMENSIONS ARE IN INCHES TOLERANCES: FRACTIONS: 1/64 DECIMALS: .005 BEND/WELD ±1/16 ± 1 DEG DECIMAL: ±.005 DECIMAL: ±.01	FINISH	SEE NOTES	DO NOT SCALE DRAWING	MATERIAL: PROJECT: KBPSRG-010-030-1	SIZE	DWG. NO.	REV	
	DRAWN	SM									10/25/2018
	CHECKED	MJS									10/25/2018
	ENG APPR.	MJS									10/25/2018
								A	KBPSRG-010-030-1	A	
								SCALE: 1:12	WEIGHT: 44.43	SHEET 1 OF 1	



INSTALLATION GUIDE

DC OR MANUAL CRANE PEDESTAL INSTALLATIONS
Installation document reflects curb side install.
Can be installed in driver side.

REF	Part Description	Qty
A	KBPSG-010-030	1
B	PLATE, HK BRACKET 10X12	1
C	PLATE, 1.5 X 1/8" PIN RET	1
D	HEX HEAD SCREW, 1/2"-13 X 2.0, G5 ZINC	2
E	HEX HEAD SCREW, 1/2"-13 X 5.0, G5 ZINC	2
F	WASHER, 1/2" SEALING NEOPRENE, GALV	4
G	FLANGED HEX NUT, 1/2-13 NYLOC, ZINC	4



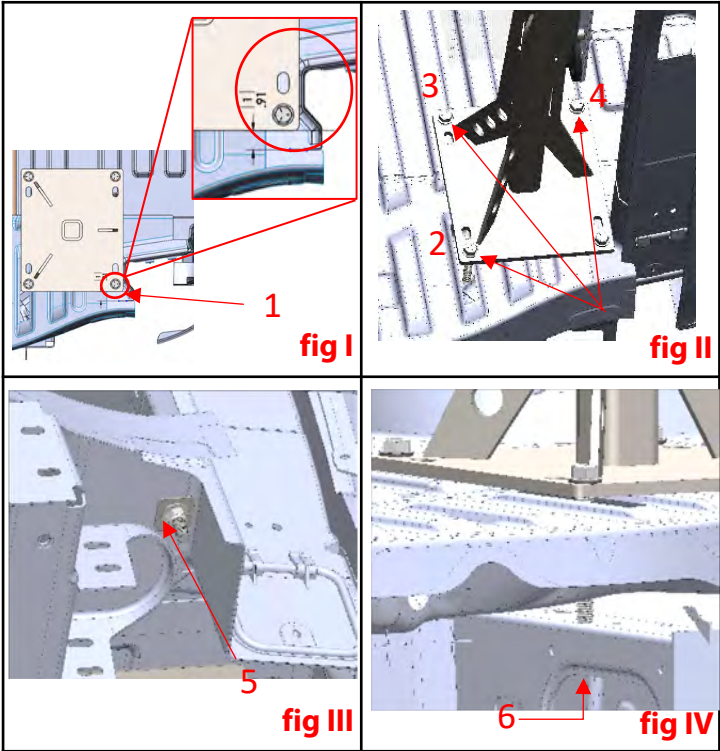
DISCLAIMER: It is recommended that SpitzLift pedestals be professionally installed. SpitzLift is not responsible for the structural integrity of the mounting structure.
CAUTION: Ensure that the location for the pedestal is clear of all wires, harnesses, lines, fuel tank, etc.

- Step 1.**
- Place the pedestal against wall as shown in (fig I). Set the pedestal back approximately 1" from the bent door flange.
 - Drill a 17/32 (.53) hole through the floor at location 1 (fig I-1) and insert hex bolt (item E) to align mount.

- Step 2.**
- Use the pedestal to mark the remaining 3 holes (fig II)
 - Remove pedestal and drill 17/32 (.53) holes through the floor.
Note: Drill hole (2) through the top of the vehicle frame.

- Step 3.**
- Place the pedestal in position to verify that the holes line up. Insert 2 qty 5" hex bolts (item E) to location 1 and 2. Insert 2 qty 2" hex bolts (item D) to locations 3 and 4 in the rear of the pedestal inside the vehicle.

- Step 4.**
- At bolt location 1, attach backing plate (item C) to the bolt and install hex nut (item G) as seen in fig III-5.
 - At bolt location 2, insert the bolt through the top of the vehicle frame. Add the hex nut (item G) through the hole on the side of the frame (fig IV-6). Reference (fig V-7) cut away drawing to see full assembly.



Step 5.

- From underneath the vehicle, install the L bracket (**item B**) on the 2 back bolts at hole locations **3** and **4**. Attach hex nuts to hold the bracket in place (**fig VI**).
- Tighten all nuts and torque to 75 ft-lbs.

Step 6.

- When the pedestal has been successfully fastened to the vehicle, ensure that everything is structurally sound. Assemble crane according to operations manual.

Step 7. SpitzLift Automotive Grade Wiring Harness Installation (For DC powered installations, supplied with SpitzLift DC cranes)

DC Wiring Harness components (**SpitzLift PN#24049**)

- 25 ft. power cable, 8 ft. ground cable
- #8 wire (600v rating UL Type MTW VW-1)
- 70amp (2 qty 35amp) circuit breakers (avg. current draw 50amps)
- Anderson (SB-50) connector



DC Wiring Harness

PART#: 24049
 Length: 25' (762 CM)

- Run wiring harness along the chassis of the vehicle. Make certain that both lead wires are properly attached along chassis without sagging and are secured from being pinched.
- Use rubber grommets on any hole penetrations. Ensure that the cable does not contact any heat sources that could cause damage.
- Attach 8 ft. ground lead to chassis. Ensure ground connection is to bare metal, paint, or seal connection after termination.
- Run positive 25 ft. lead, which includes automatic circuit breakers, and terminate to positive battery connector or to auxiliary lug.
- Position power supply connector for plugging the SpitzLift extension power cord (4 ft. standard length **SpitzLift PN#24085-4**) onto the side wall in a location that is unobstructed within 2' of the SpitzLift power unit (**fig VII-7**).

Step 8.

- Insert SpitzLift into the pedestal and perform recommended load test. 125% of max capacity.

Step 9. (Securing crane for travel)

- For fold-down cranes**, place crane in folded position and insert hook into eye of pedestal. Reel webbing or cable in to tighten and secure, (**Fig VII**).
- For non-folding cranes**, locate a connecting point within the vehicle to attach the hook. Reel in webbing or cable to tighten and secure.

**This may require installation of a tie-down for attaching the hook.*

Note: If crane continues to chatter, tighten the strap a little more. Caution – do not over tighten.

Step 10.

- Unplug power cord for travel and when crane is not in use.

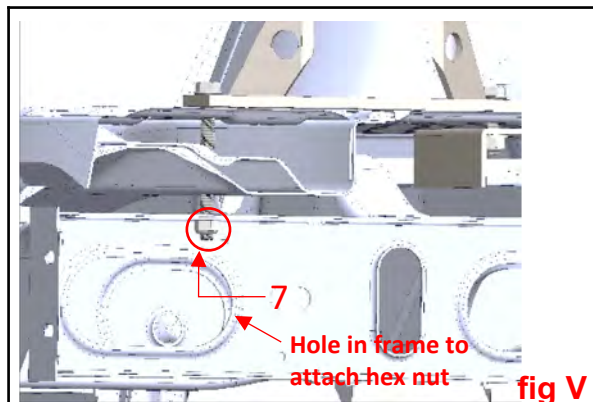


fig V

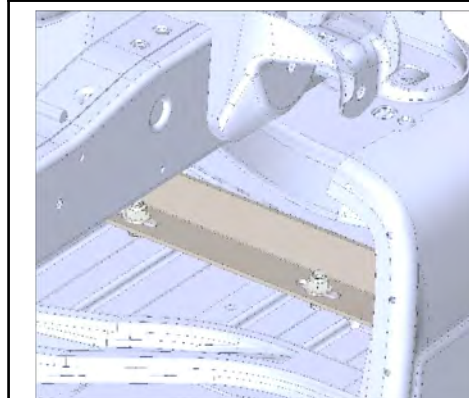


fig VI

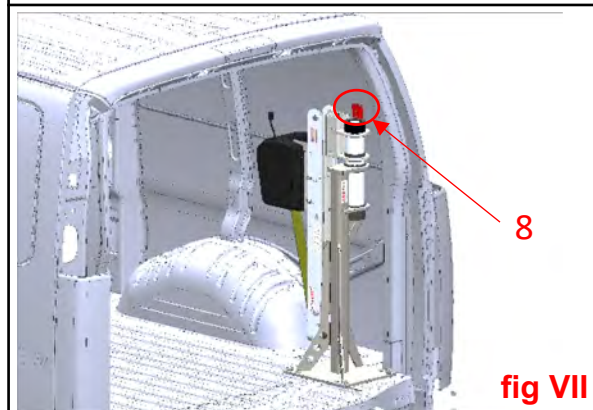


fig VII